

# ODA465-30V-MH

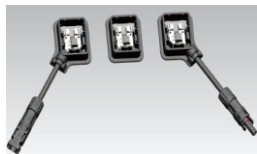
Topcon Technology

## DIMENSIONS

1903\*1134\*30mm

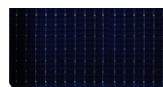
## CELL SIZE

182\*91mm

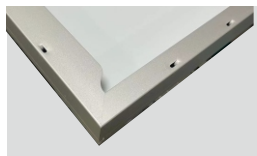


### JUNCTION BOX

Waterproof protection grade: IP67/IP68  
 Safety Level: Class II  
 Maximum System Voltage: 1500V  
 outstanding waterproof level ·  
 Effectively resist harsh environments



16BB



### Frame

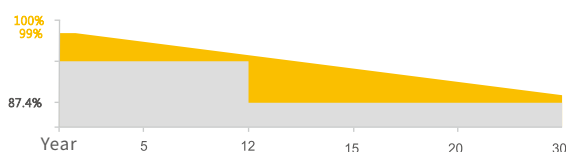
Strong mechanical load  
 resistance up to 5400Pa  
 Anodic oxidation layer resistant to  
 chemical corrosion available  
 in silver and black

## QUALIFICATIONS AND CERTIFICATES



· IEC61215 / · IEC61730

## WARRANTY



12 YEARS

Guarantee on product material and workmanship

30 YEARS

Linear Power output warranty



### SMBB Technology

Better light trapping and current collection to improve module power output and reliability.



### Enhanced Mechanical Load

Certified to withstand: wind load (2400 Pascal) and snow load (5400 Pascal).

NINGBO OSDA SOLAR CO.,LTD  
[www.osdasol.com](http://www.osdasol.com)

OSDA Solar established in 2008, is a high-tech enterprise integrating R&D, production and sales of solar energy products. It is committed to the overall solution of distributed photovoltaic system and provides services from consulting, design, construction, financing to intelligent operation and maintenance.

OSDA has 3 production sites in China and branches and representative offices in more than 10 countries overseas. Products include solar cells, modules, On/Off grid solar system, solar pump and other solar related applications. Our products have passed many international certifications such as TÜV, MCS, CEC, IEC, ISO, CE, CQC and so on. With excellent quality, our products are exported to more than 100 countries of the world.

Since its establishment, OSDA has always followed the idea of "Smart energy · Lightening future". It has followed the steps of "the Belt and Road Initiative", we bring bright light to the countries and people who are short of electricity. Sharing the concept of modern civilization, and building a green home together.

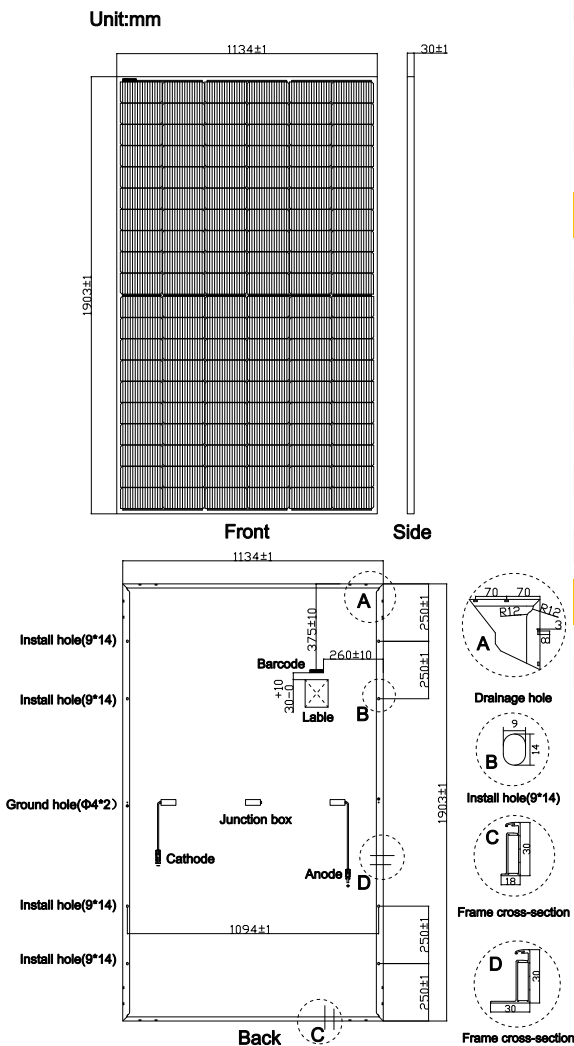
## ELECTRICAL DATA (STC)

Model Type	ODA465-30V-MH
Peak Power(Pmax)	465.00
Maximum Power Voltage(Vmp)	34.89
Maximum Power Current(Imp)	13.33
Open Circuit Voltage(Voc)	42.22±3%
Short Circuit Current(Isc)	14.07±3%
Module Efficiency( % )	21.55

\* STC: irradiance 1000 W/m<sup>2</sup>, AM 1.5, and cell temperature of 25°C

\* Tolerance: Voc±3%; Isc±3%

## PV DRAWINGS



## TEMPERATURE & MAXIMUM RATING

Maximum System Voltage (V)	1500 V
Maximum Series Fuse Rating (A)	25 A
Power Tolerance	±3%
Pmax Temperature Coefficients (W/°C)	-0.300 %/°C
Voc Temperature Coefficients (V/°C)	-0.250 %/°C
Isc Temperature Coefficients (A/°C)	+0.046 %/°C
NOCT Nominal Operating Cell Temperature (°C)	45±2 °C
Operating and Storage Temperature (°C)	-40~+85 °C

## MECHANICAL CHARACTERISTICS

Cell Type	182*91 N Type Mono
No. of Cells	120 (12*10)
Dimensions	1903*1134*30mm
Weight	23.80kg
Front Glass	3.2mm high transmission, low iron, tempered glass
Frame	Anodized Aluminium Alloy
Junction box	IP67/IP68 3diodes
Output cables	4mm <sup>2</sup> cable 35cm (Including Hengda PV-ST101 connector)
MaxWind Load/Snow Load	2400Pa/5400Pa
Fire safety class	Class C

## PACKING WAY

20FT container	6 Packages/222pcs
40HQ container	24 Packages/888pcs

## IV CURVE

